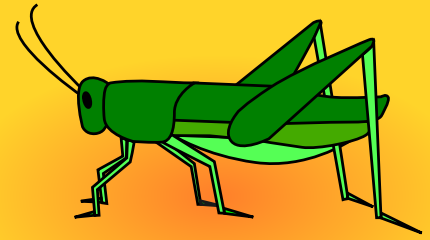
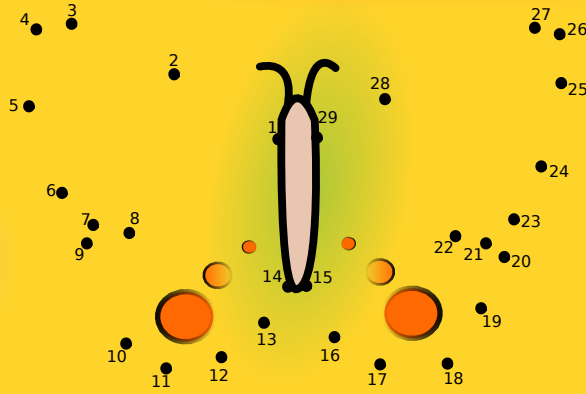
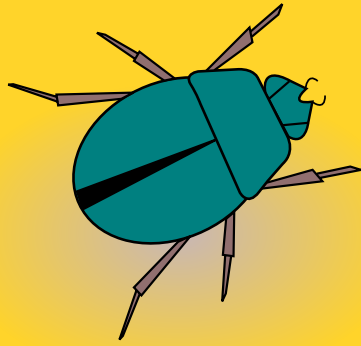
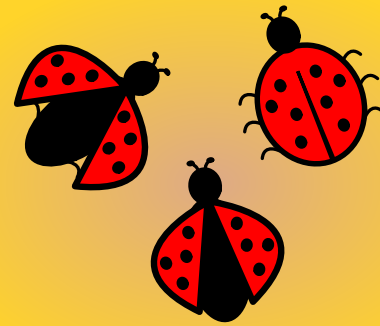


MY BUGS ACTIVITY BOOK



How many ants are on this cover?



INCLUDING:

COLORING PAGES -- COUNTING PAGES

TIC-TAC-TOE -- THE DOT BOX GAME

MAZES -- NUMBER MAZES

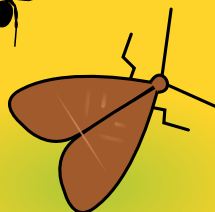
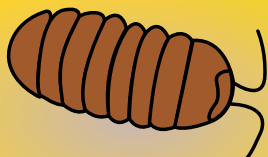
WORD FINDER -- WORD UNSCRAMBLE

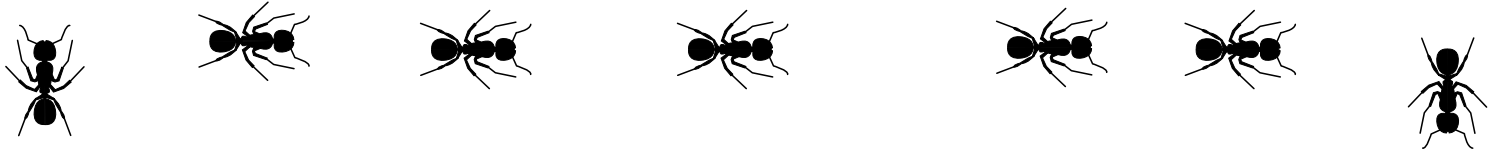
CONNECT THE DOTS -- WORD SEARCH

FIND ALL 10 FLEAS ON THE PAGE

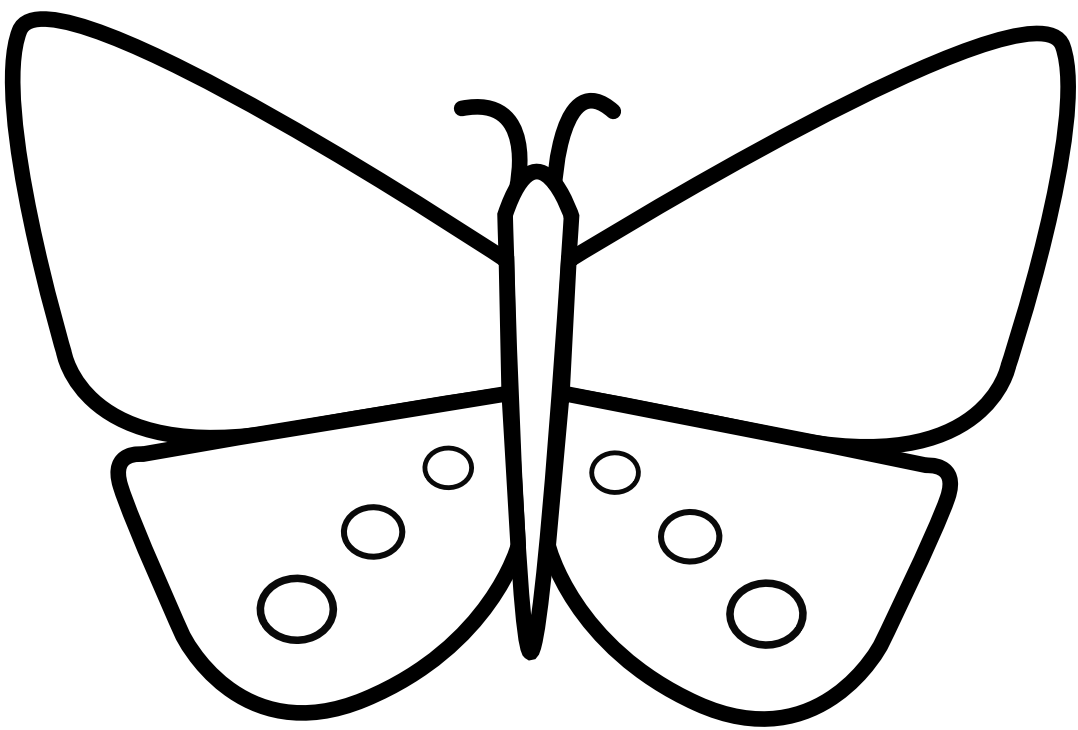
By

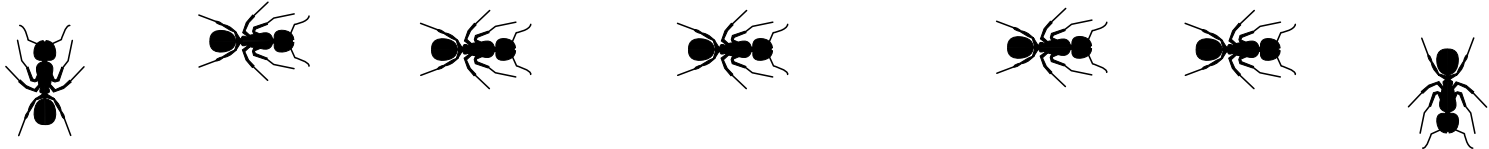
DoyouMAZE.com



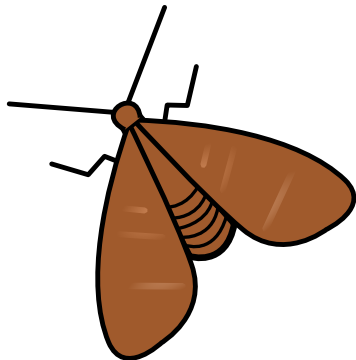


Butterflies come in many colors and patterns. Design and color this butterfly.

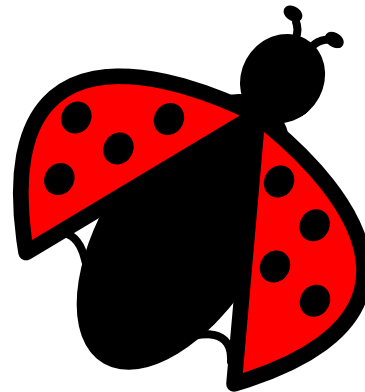




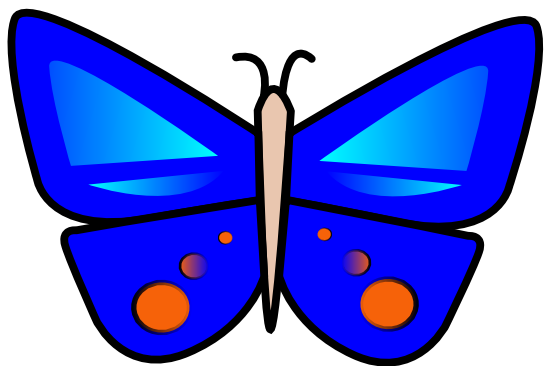
Which bug does not belong ?



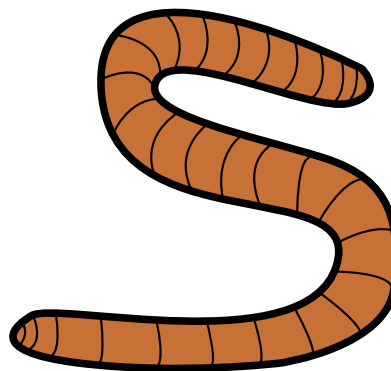
moth



ladybug



butterfly



worm





**How many words can
you make using the
letters in
LADYBUG ?**









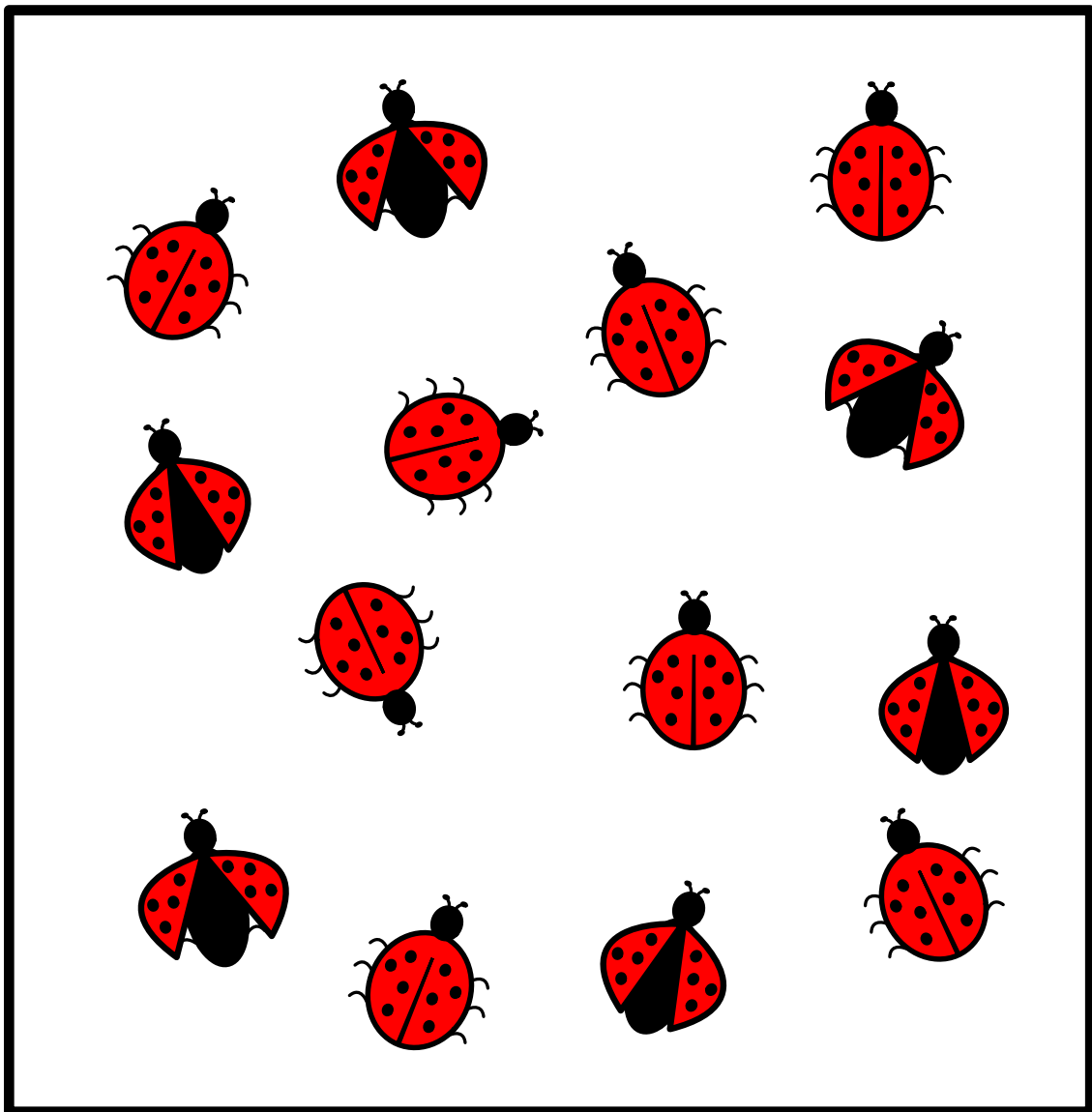




3



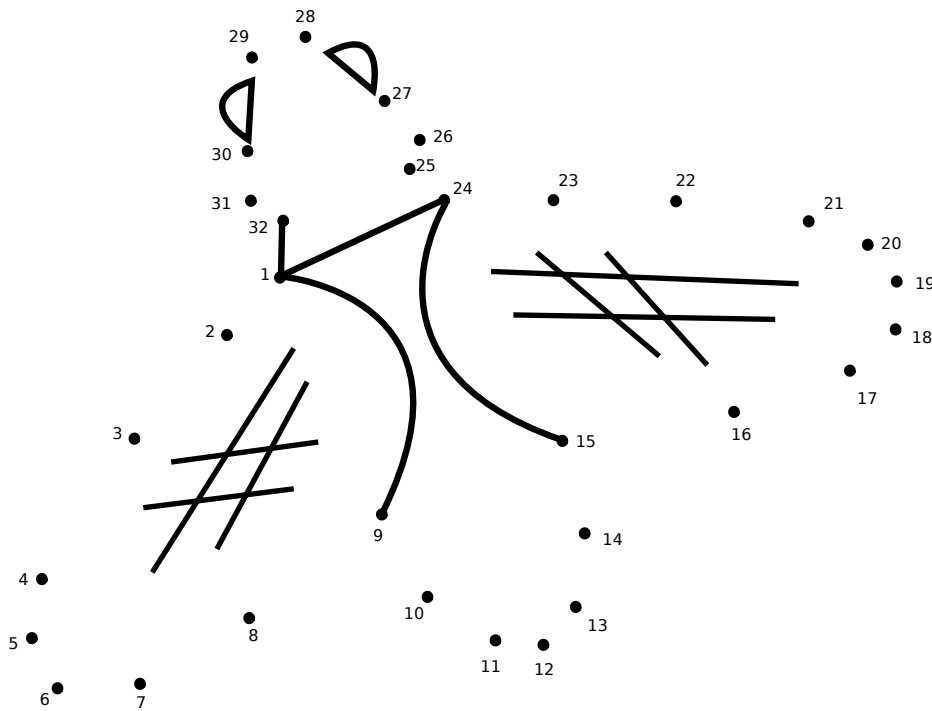
How many ladybugs are in the box ?

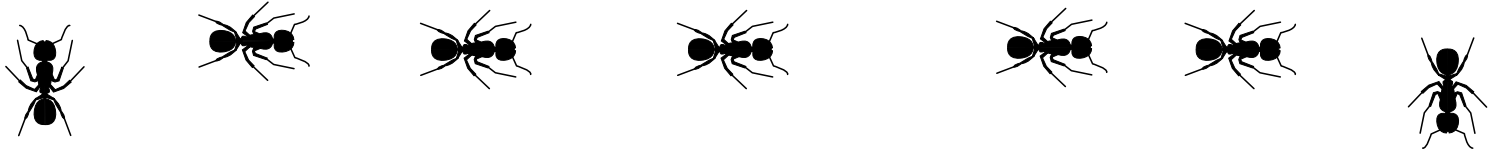


4



Connect the dots, then color the insect !

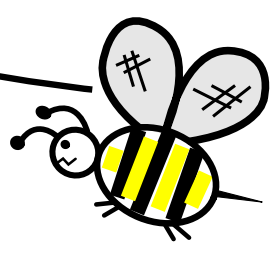
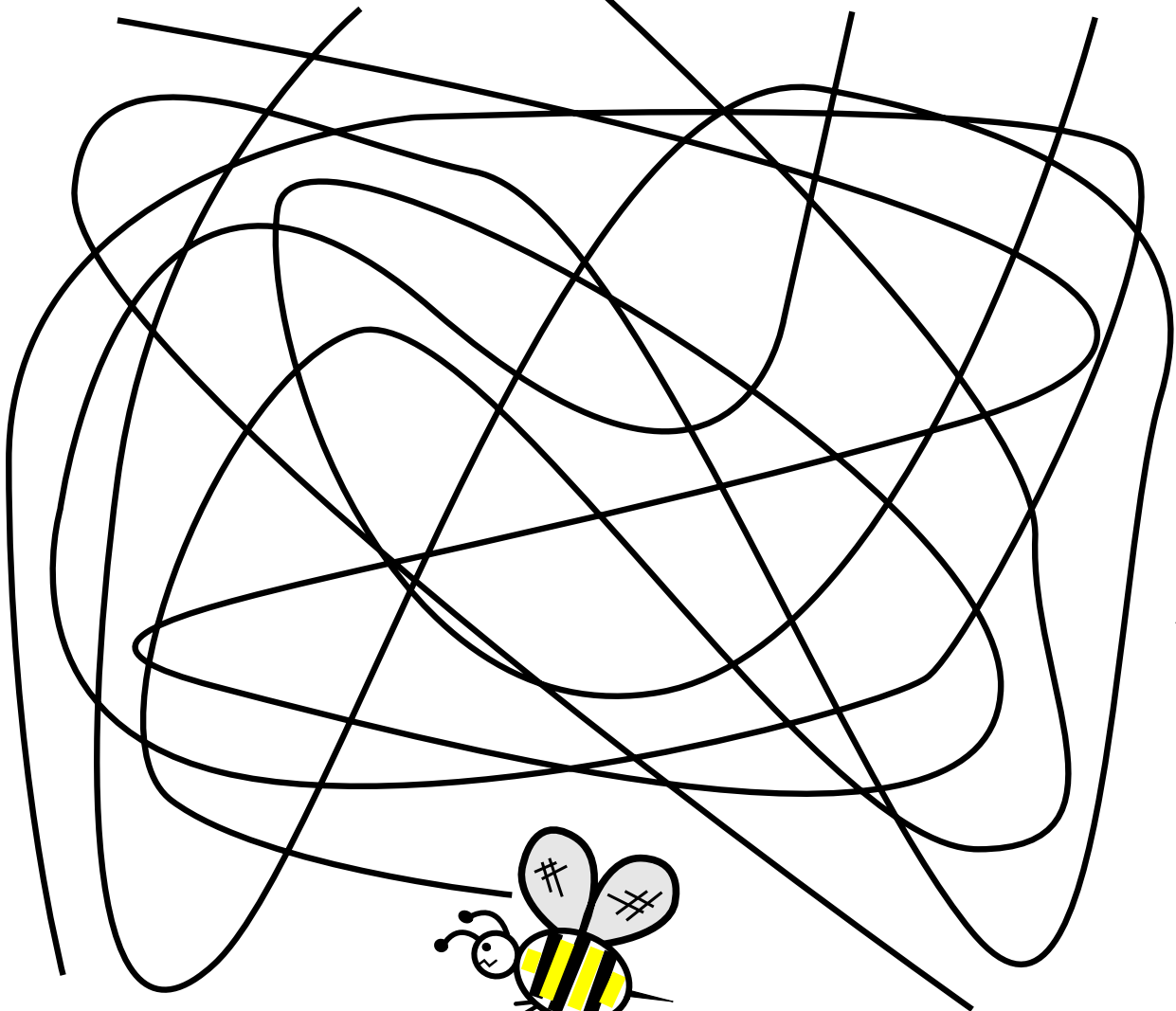




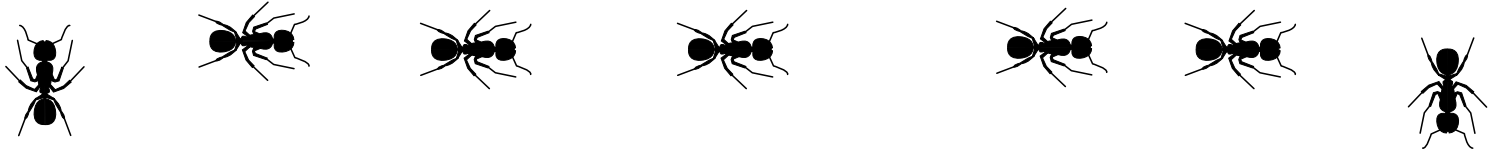
Which line leads to the bee ?



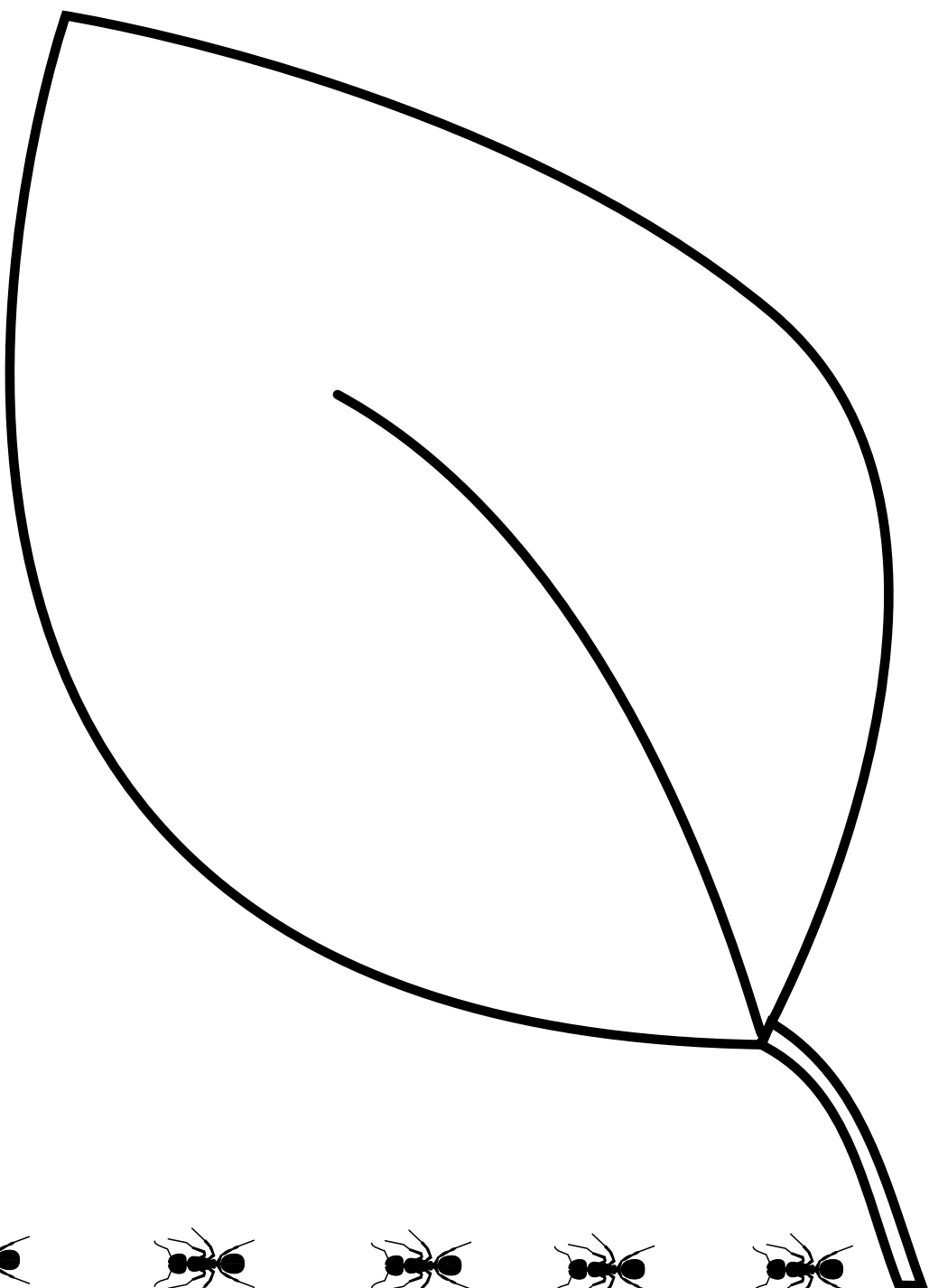
1 2 3 4 5



6



Draw bugs on the leaf !





WORD SEARCH

Find the words



T	A	N	G	R	E	D	I	P	S	T
A	N	E	R	E	G	R	M	A	S	E
M	H	M	A	N	D	A	O	U	E	N
O	O	E	S	T	I	G	C	A	L	R
S	R	T	S	E	M	O	N	P	C	O
Q	U	C	H	K	L	N	L	E	I	H
U	K	E	O	C	A	F	O	L	C	E
I	E	S	P	I	I	L	L	T	A	N
T	A	N	P	R	S	Y	K	E	D	I
O	C	I	E	C	A	N	M	E	A	P
Y	L	F	R	E	T	T	U	B	N	S
E	L	A	D	Y	B	U	G	E	T	O
Y	B	E	E	B	Y	E	N	O	H	U



- | | | | |
|-----------|-------------|----------|----------|
| ANT | DRAGONFLY | HONEYBEE | MIDGE |
| BEETLE | FIREFLY | HORNET | MOSQUITO |
| BUTTERFLY | FLEAS | INSECT | MOTH |
| CICADA | GNAT | LADYBUG | ROACH |
| CRICKET | GRASSHOPPER | LOCUST | SPIDER |





HIDDEN MESSAGE

Circle every 5th letter to find the secret message



A	T	S	E	B	I	D	A	C
U	B	T	S	K	S	Y	L	M
E	Y	A	I	T	U	A	I	O
R	L	S	C	V	D	B	A	E
T	A	E	B	M	I	C	D	E
S	D	T	S	E	N	A	T	S



ANSWER:




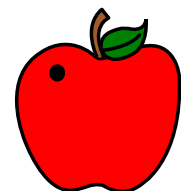




COUNTING MAZE

Lead the worm to the apple counting by threes to advance



		9	7	13	12
		12	3	7	9
6	3	6	8	12	13
8	5	9	12	15	18
18	16	12	27	24	21
25	21	18	30	28	25
28	24	27	33		
31	29	32	35		



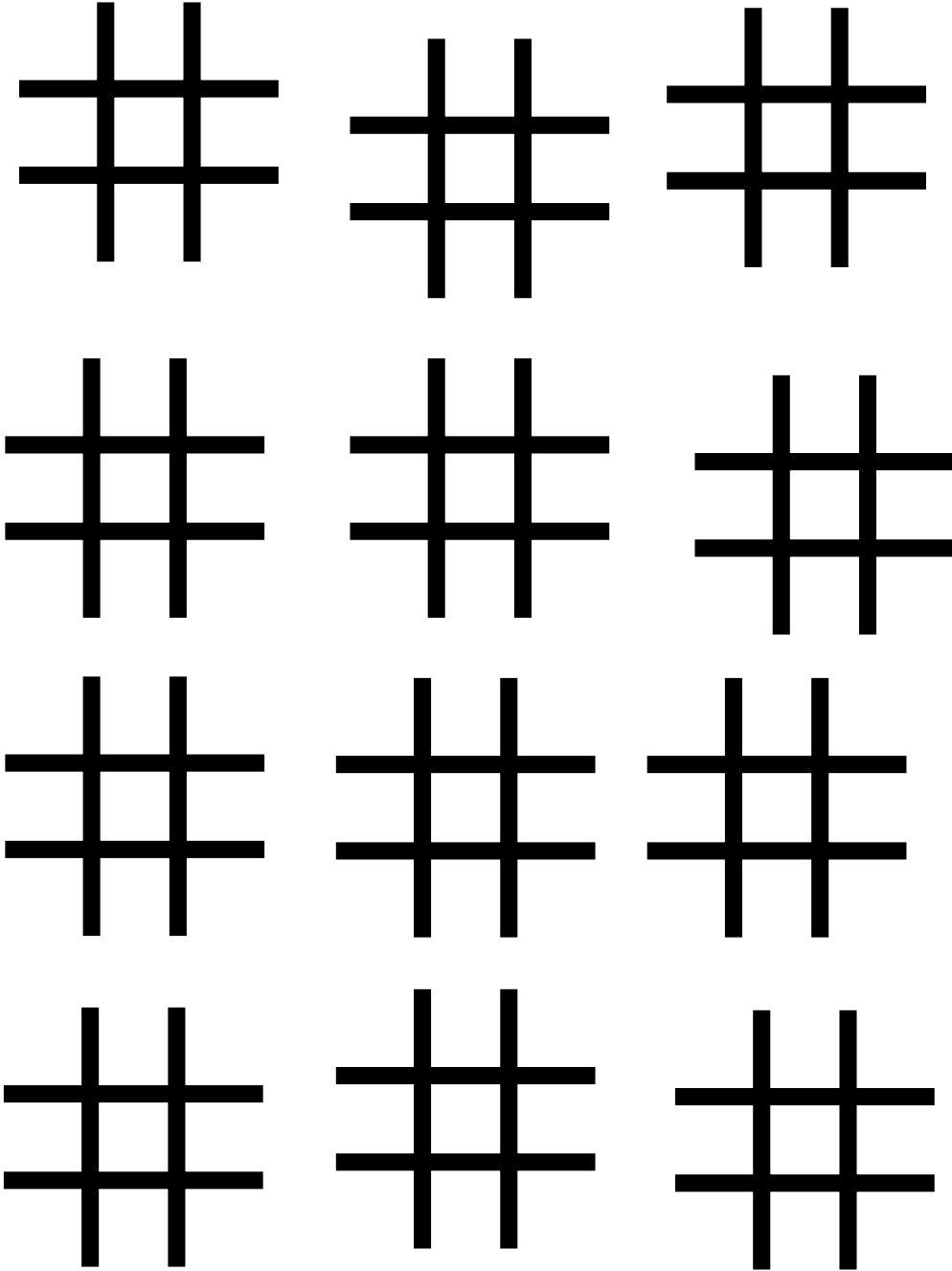


DOT BOX GAME
 With a friend take turns connecting
 2 dots (flies) with a line. Whoever
 completes a box puts their initial in
 it. The person with the most
 squares at the end wins !



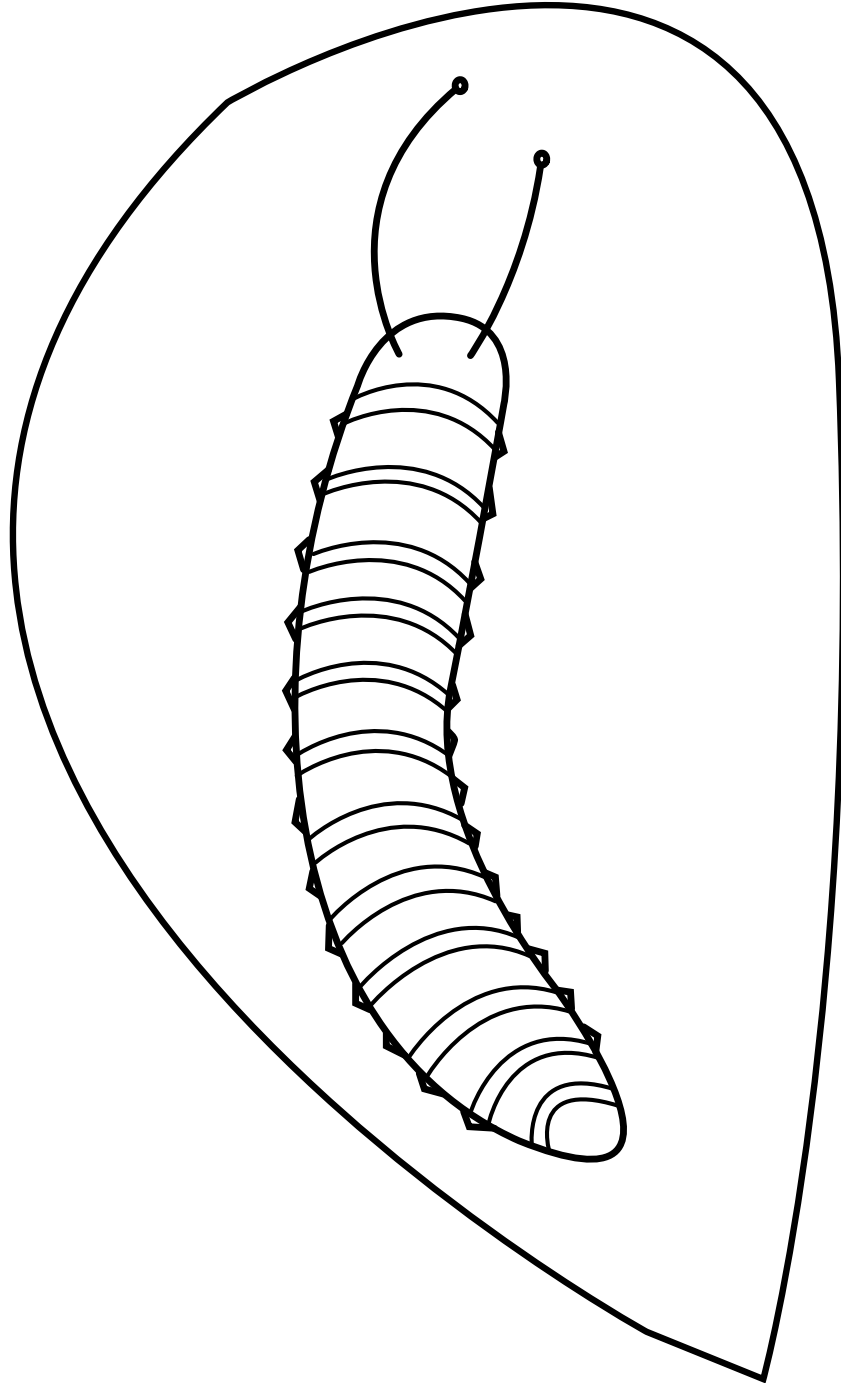
11

TIC TAC TOE

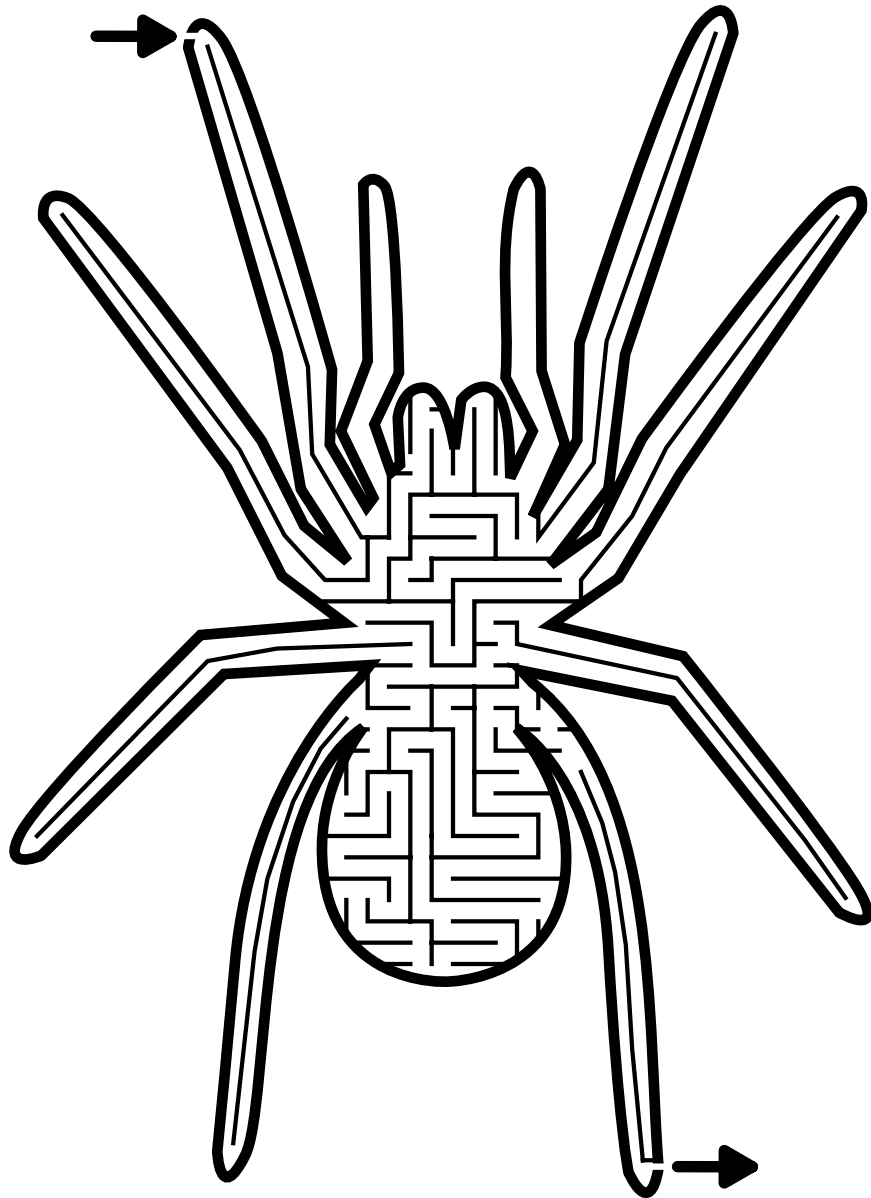




Color the caterpillar on the leaf

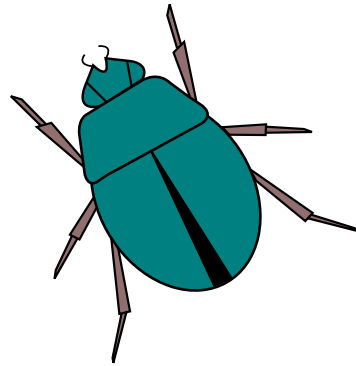
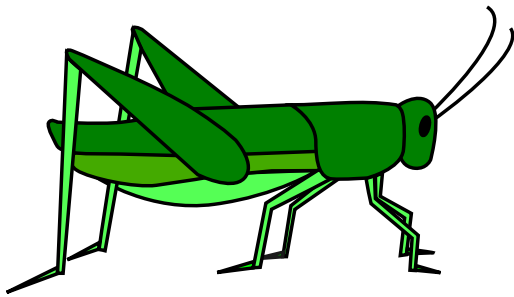


Solve the Spider maze !



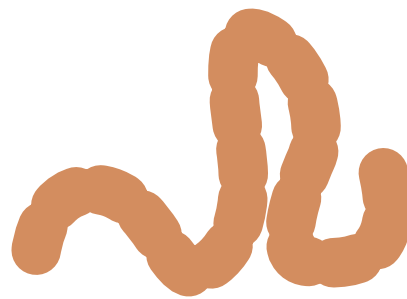
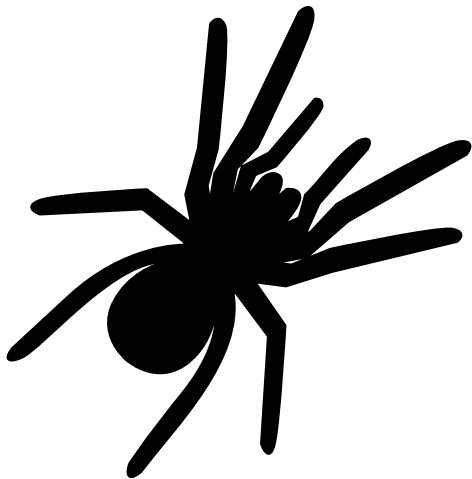


Which bug does not belong ?



grasshopper

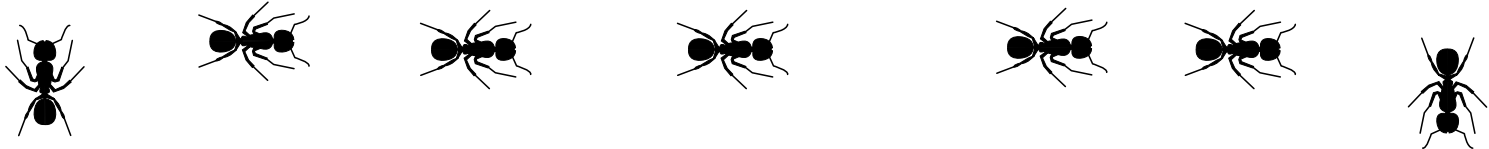
beetle



spider

worm





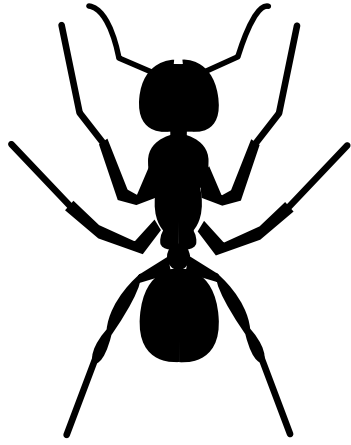
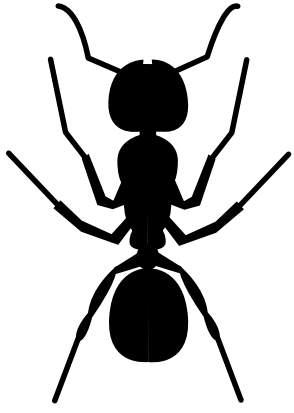
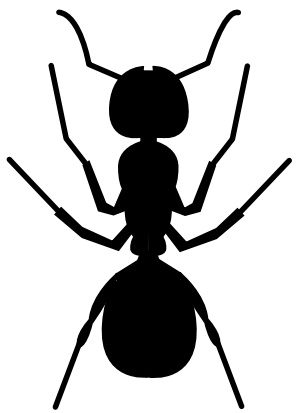
**Which two of these
are the same ?**



1

2

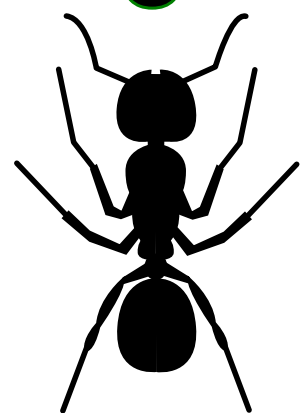
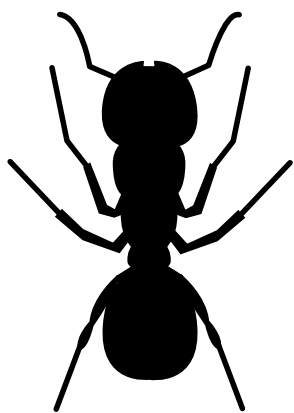
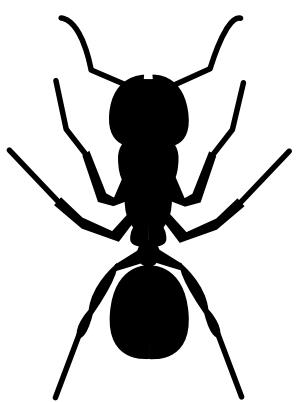
3



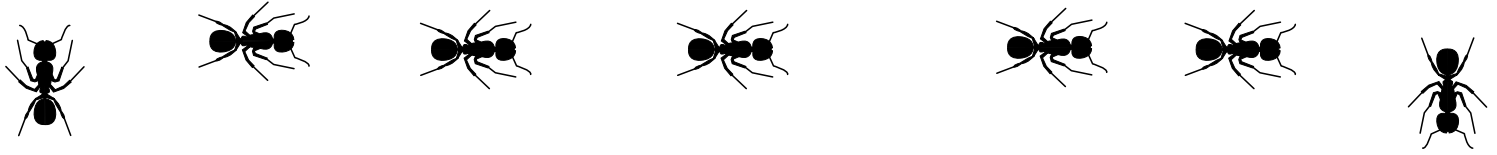
4

5

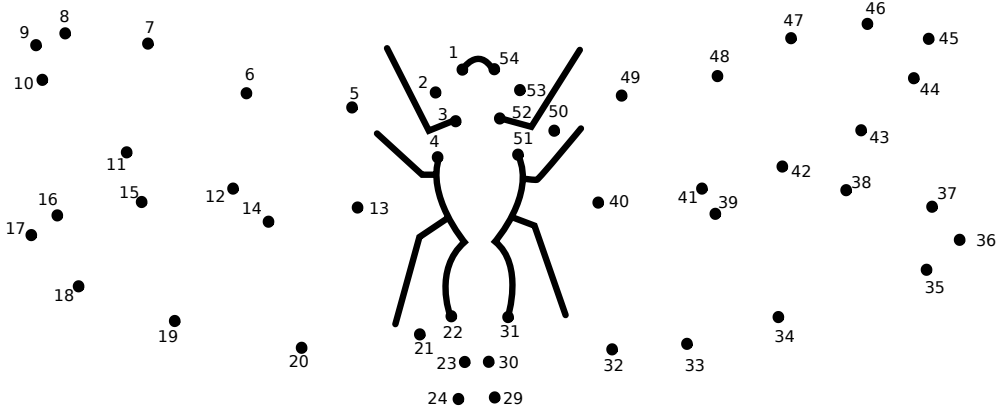
6



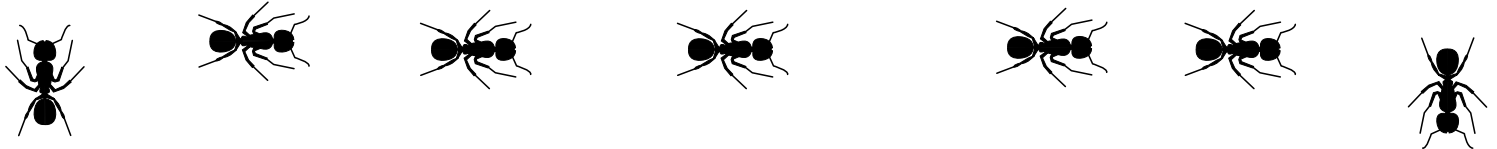
16



Connect the dots, then color the insect !



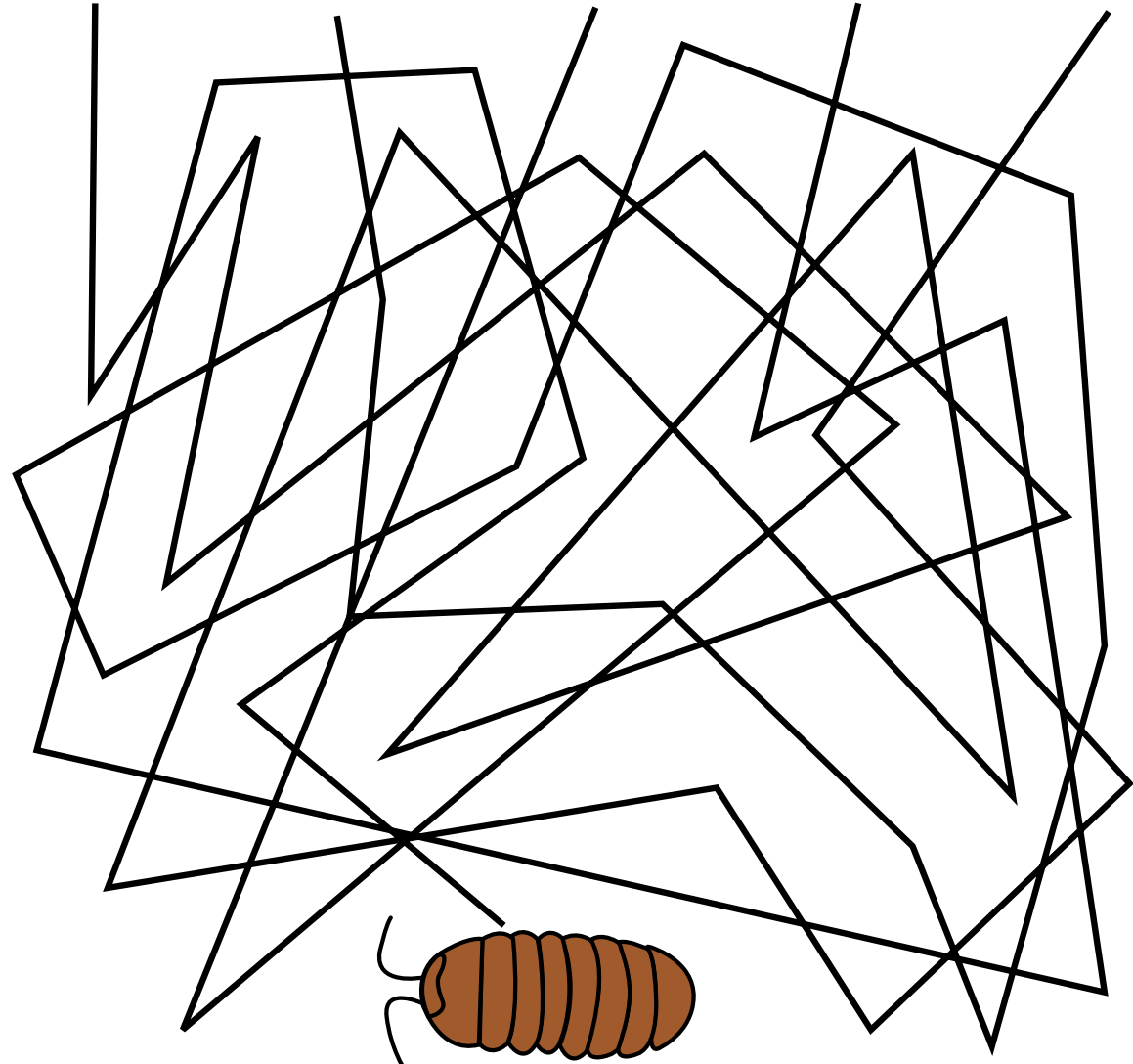
25 ● ●28
26 ● ●27



Which line leads to the roly polly bug ?

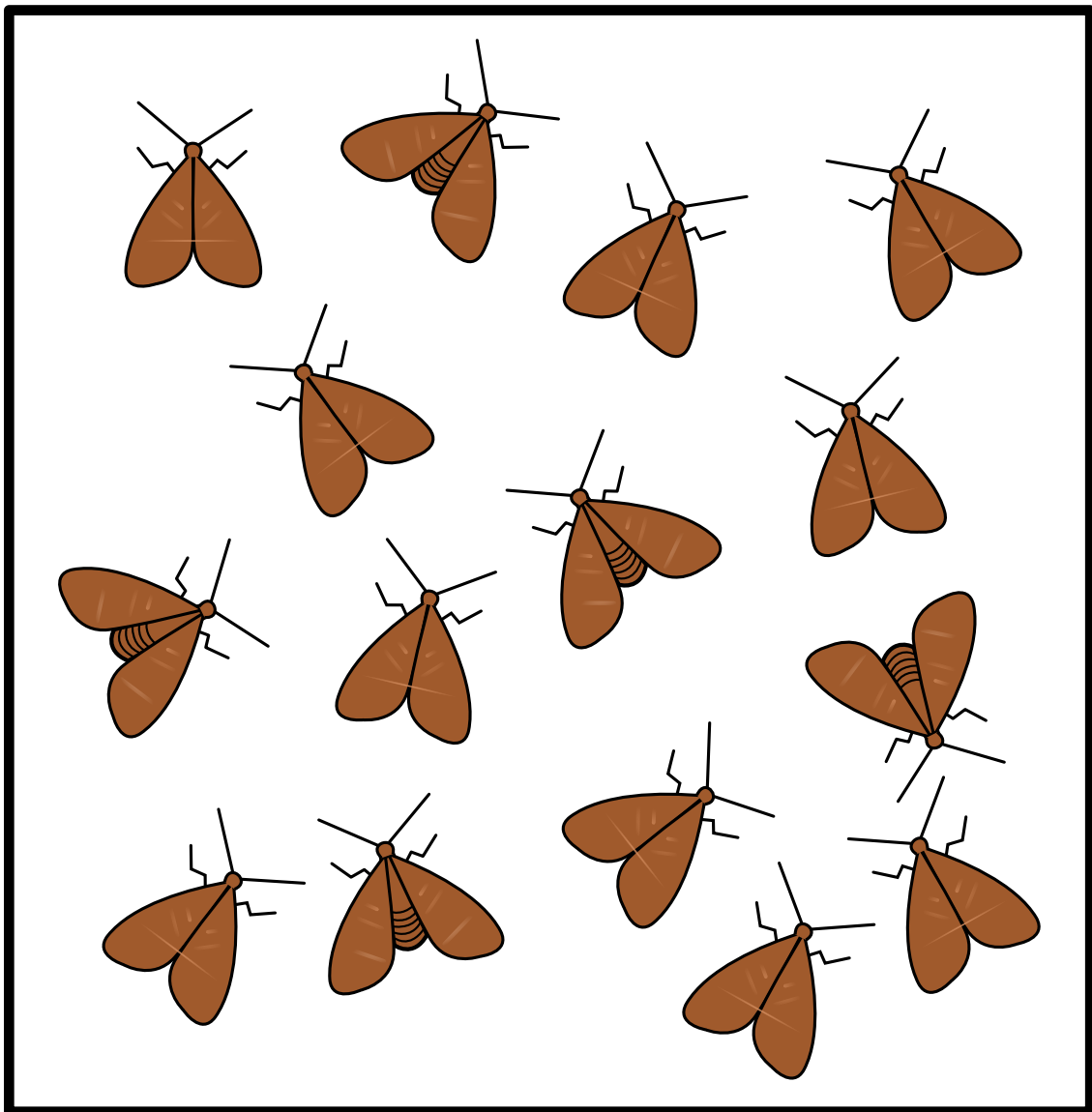


1 **2** **3** **4** **5**





**How many
moths are in the
box ?**





19



HIDDEN MESSAGE

Circle every 3rd letter to find the secret message



A	T	A	E	B	N	D	A	T
U	B	S	S	K	W	Y	L	O
E	Y	R	I	T	K	A	I	L
R	L	I	C	V	T	B	A	T
T	A	L	B	M	E	C	D	B
S	D	Y	S	E	L	A	T	I
Q	V	T	W	F	T	K	E	L
C	A	E	D	!	!			



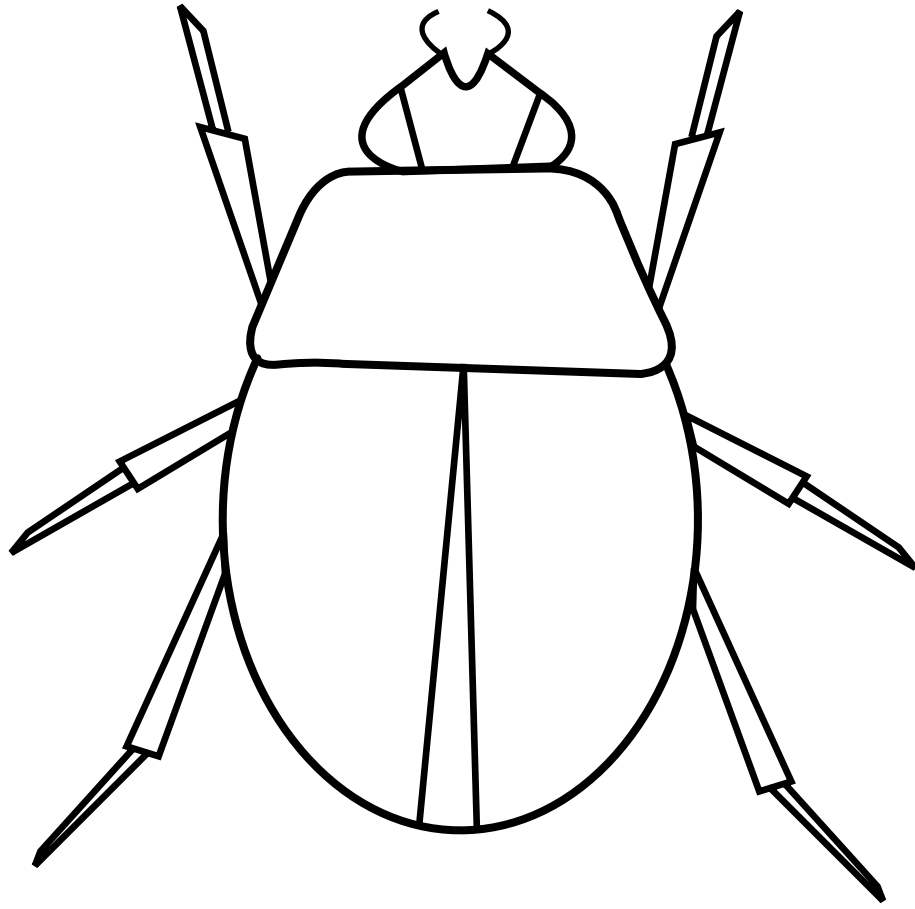
ANSWER:



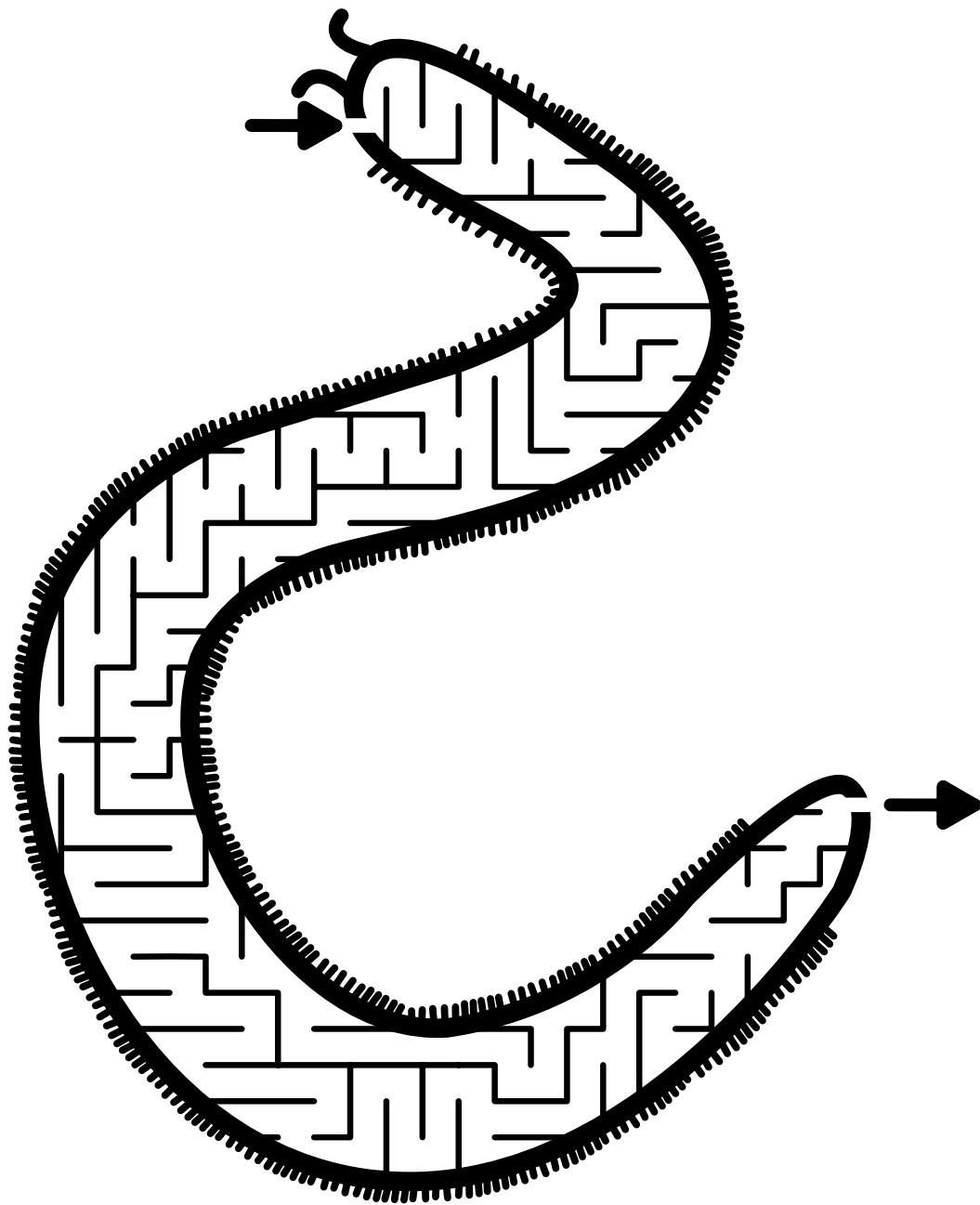




Beetles come in many colors and patterns. Design and color this beetle.



Solve the millipede maze !





COUNTING MAZE

Lead the ant to the anthill counting by fours to advance



		4	8	12	14
		10	14	16	18
2	6	8	22	20	22
8	10	16	28	24	26
18	16	36	32	24	30
50	48	40	34	28	34
56	52	44	46		
58	54	48	52		





Unscramble the letters to make bug and insect words !



SPAOPGRSHER _____



TOMH _____

BYOEEHN _____



ETLUFRTBY _____



TLEEB _____



OSTLUC _____



ILLTANH _____



OIMUQSTO _____

TEKRICC _____



YARLGONDF _____



ETTEMIR _____



ANSWERS by page

2 Worm (no wings)

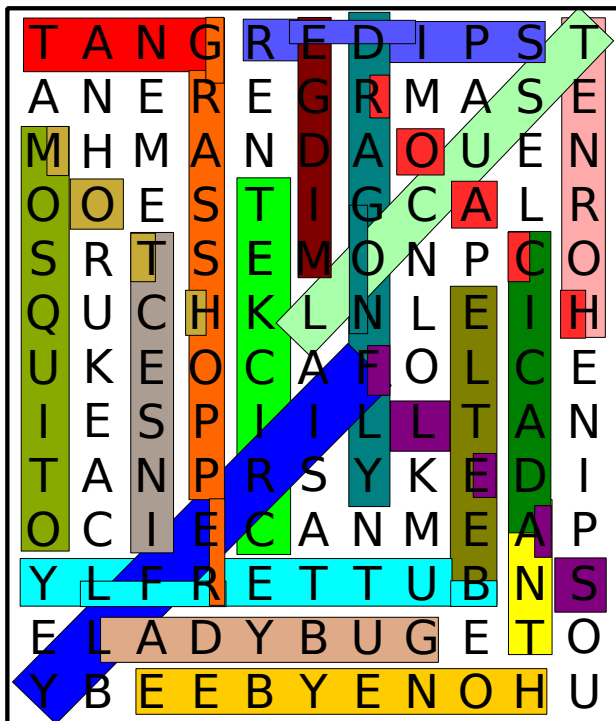
3 Ab, Ad, Ag, Al, Ay, Ba, By, La, Ya, Aby, Alb, Bad, Bag, Bal, Bay, Bud, Bug
 Buy, Dab, Dag, Dal, Day, Dub, Dug, Gab, Gad, Gal, Gay, Gul, Guy, Lab, Lag
 Lay, Lug, Yag, Ably, Agly, Auld, Bald, Baud, Daub, Dual, Duly, Gaby, Gaub
 Glad, Lady, Laud, Ugly, Yald, Yaud, Yuga, Badly, Blady, Bulgy, Dauby
 Gaudy, Glady, Yauld

4 14 ladybugs



6 #3

10

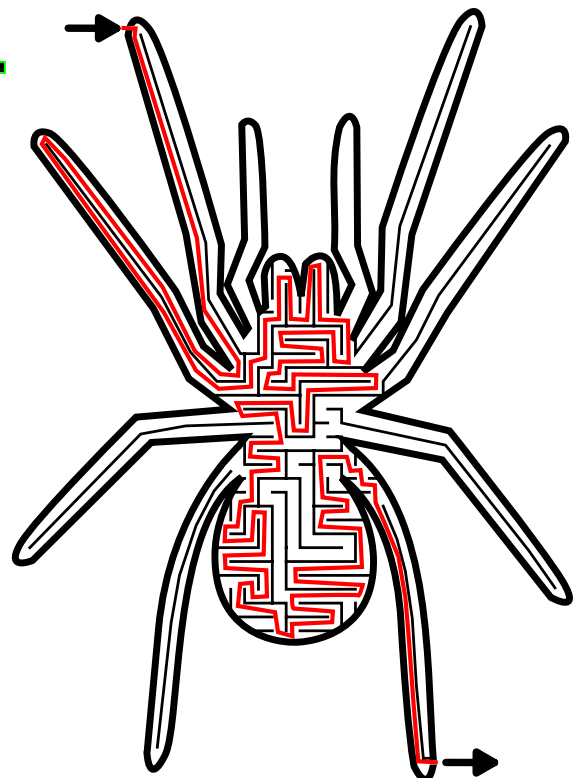
8



- ANT
- BEE
- BUTTERFLY
- CICADA
- CRICKET
- DRAGONFLY
- FIREFLY
- FLEAS
- GNAT
- GRASSHOPPER
- HONEYBEE
- HORNET
- INSECT
- LADYBUG
- LOCUST
- MIDGE
- MOSQUITO
- MOTH
- ROACH
- SPIDER

	9	7	13	12
	12	3	7	9
6	3	6	8	12
8	5	9	12	15
18	16	12	27	24
25	21	18	30	28
28	24	27	33	
31	29	32	35	

14



9 Busy as a bee

ANSWERS by page

15 Worm (no legs)

23

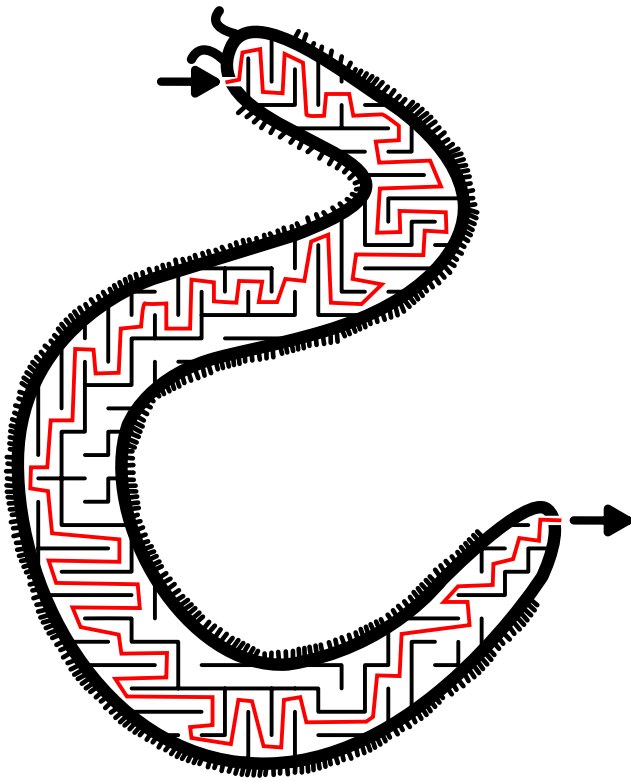
16 #2 and #6



18 #4

19 15 moths

20 Ants work little by little !

22



		4	8	12	14
		10	14	16	18
2	6	8	22	20	22
8	10	16	28	24	26
18	16	36	32	24	30
50	48	40	34	28	34
56	52	44	46		
58	54	48	52		

24 GRASSHOPPER

MOTH

HONEYBEE

BUTTERFLY

BEETLE

LOCUST

ANTHILL

MOSQUITO

CRICKET

DRAGONFLY

TERMITE

24 PAGES OF ACTIVITIES

INCLUDES:

COLORING PAGES – COUNTING PAGES

TIC-TAC-TOE – THE DOT BOX GAME

DRAWING CHALLENGE – LINE LEADS MAZE

NUMBER MAZE – WORD FINDER – MAZES

WORD UNSCRAMBLE – CONNECT THE DOTS

WORD SEARCH – FIND THE HIDDEN MESSAGE

WHAT DOESN'T BELONG? – MATCH GAME

